

About Us

DEAOU GENE is a company specializing in molecular diagnostics within the In Vitro Diagnostics (IVD) field. With a focus on innovative technology and proprietary intellectual property, DEAOU GENE has developed an automated molecular Point-of-Care system, offering a complete range of detection consumables, reagents, and instruments. As a dynamic and rapidly growing company, DEAOU GENE is driven by a professional team dedicated to advancing diagnostic technology and delivering high-quality products and services to improve healthcare outcomes and accessibility.



Specifications

Diagnostics Reagent Kit	
Sample volume	200μL-1mL
Detectable target Pathogens	Bacteria, viruses, mycoplasma, chlamydia, etc
Sample type	Nasopharyngeal swabs, sputum, bronchoalveolar lavage fluid, feces, urine, blood, cerebrospinal fluid, etc
Temperature Controlling System	
Pyrolysis temperature range	Room temperature ~100°C
Dye	Channel 1:FAM Channel 2: HEX Channel 3:TAMRA Channel 4: ROX/TEXAS RED Channel 5: CY5 Channel 6: CY5.5
Temperature range	4~105°C
Accuracy	±0.1°C
Heating ramp rates(max.)	2.5°C/s From 50°C to 90°C
Cooling ramp rates(max.)	2.0°C/s From 90°C to 50°C
Working Conditions	
Dimensions	350(W)mmx600(L)mmx550(H)mm
Weight	48kg
Interface mode	Network port, USB port
Working conditions	10°C~30°C

Contact Us

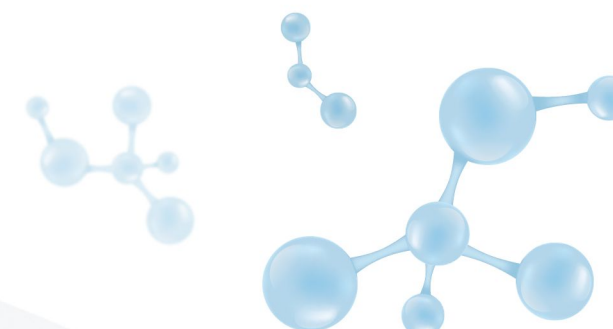
Tel: 00-86-020-28200529 | Email: sales@deaou.cn

Address: 603- G12, No.31, Kefeng Road, Huangpu District, 510663 Guangzhou, Guangdong, P.R. China

Test Smarter, Act Faster

ART04

Integrated Molecular POC System



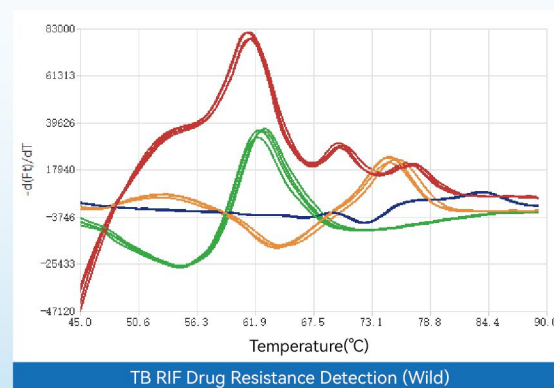
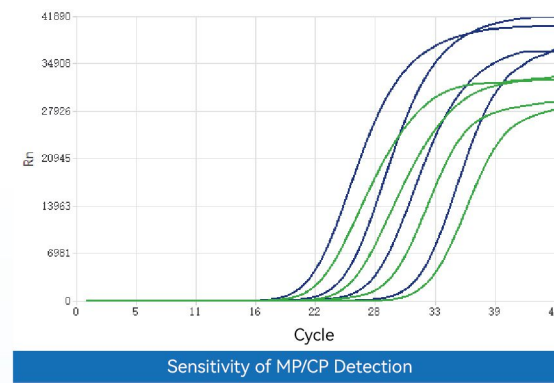
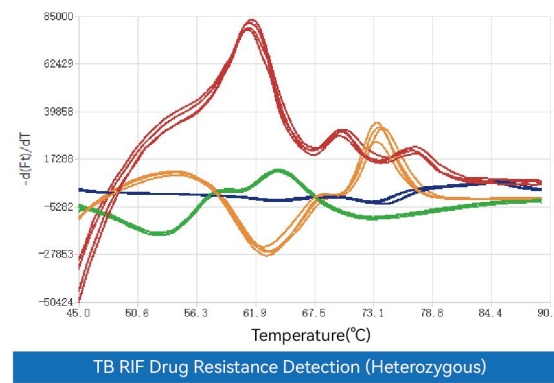
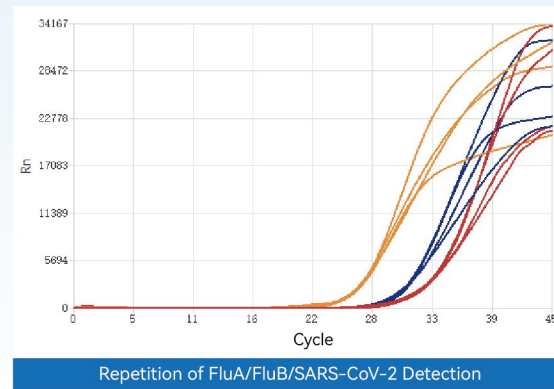
About ART04



- Fully automated magnetic bead technology
- Mini-lab Cartridge
- High-speed multichannel fluorescence acquisition technology



- Rapid temperature control technology
- Multi-color melting curve technique
- Automatic control technology with core algorithms

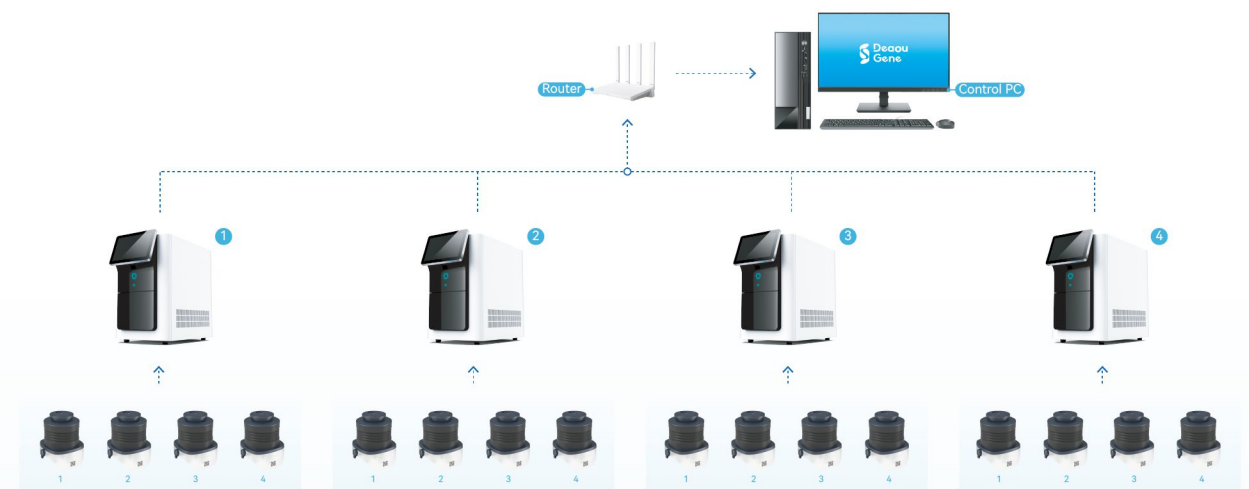


Types of Reagent Kits

Available		
Respiratory	FLU/RSV/SARS-CoV-2	Detection and differentiation of Flu A, Flu B, RSV and SARS-CoV-2
	MP/CP	Detection and differentiation of <i>Mycoplasma pneumoniae</i> and <i>Chlamydia pneumoniae</i>
	MTB/NTM/RIF	Detection and differentiation of <i>Mycobacterium tuberculosis</i> complex & Non-tuberculous Mycobacteria, and Rifampin-resistance associated mutations
	MTB/INH/FLQ	Detection of <i>Mycobacterium tuberculosis</i> complex and mutations associated with resistance to Isoniazid and Fluoroquinolones
Under Development		
Respiratory	Carba-R	Detection and differentiation of carbapenem-resistance genes (KPC, NDM, VIM, IMP, and OXA-48) from sputum/bronchoalveolar lavage fluid samples
	MRSA/SA	Detection of <i>Staphylococcus aureus</i> and methicillin-resistant <i>S. aureus</i> (MRSA) from sputum or bronchoalveolar lavage fluid samples
	LRTI-B	Detection of major bacterial pathogens in lower respiratory tract infections, including <i>S. pneumoniae</i> , <i>H. influenzae</i> , <i>K. pneumoniae</i> , <i>P. aeruginosa</i> , <i>A. baumannii</i> , <i>L. pneumophila</i> , <i>S. maltophilia</i> , and <i>E. coli</i> (regional customization available)
Arbovirus	ZIKV/DENV/CHIKV	Detection and differentiation of Zika virus, Dengue virus, and Chikungunya virus
Sexual Health	HPV	Detection of high risk Human Papillomavirus (HPV) — identifies types HPV 16 and HPV 18 individually; reports 12 other high risk types in pooled results
Gastrointestinal	GIs	Detection and differentiation of major gastrointestinal pathogens, divided into 3 panels: Bacteria, Parasites, and Viruses

Greater Throughput

ART04 can cascade up to 4 instruments and control them in the same computer



ART04 can simultaneously accommodate up to 4 cartridges

Application Scenarios

Clinical Infections

- Drug guidance**
Oncology, Cardiology, Neurology, etc
- Infections**
Respiratory tract, gastrointestinal, bloodstream, nervous system, hepatitis, and reproductive infections
- Genetic diseases**
Deafness, folic acid deficiency, alcohol genes, etc

Non-clinical

- Pet viruses**
Rabies virus, canine parvovirus, etc
- Food safety**
Salmonella, *Staphylococcus aureus*, *Escherichia coli*, *Listeria*, *Enterobacter sakazakii*, etc
- Animal diseases**
Bird flu, Newcastle disease, African swine fever